

CSSCR
WINTER 2012
NEWSLETTER

CENTER FOR
SOCIAL
SCIENCE
COMPU-
TATION
AND
RESEARCH



TABLE OF CONTENTS

From the Director1
From the Archivist2
Class Schedule3
Class Descriptions 4-5

CONSULTANTS

Colin Beam, Psychology
Angela Capoccia, Economics
Joe Eckert, Geography
Eric Hamilton, Education
Tabitha Hart, Communications
Stephanie Lee, Sociology
Jeffrey Mathias, Social Work
Kristan Seibel, Political Science
Allie Stanko, Jackson School

ADMINISTRATIVE STAFF

Fred Nick, Director
Kathy Davis, Fiscal Specialist
Tina Tian, Research Data Analyst/Archivist
Markus Tsai, LAN Manager
Dixielynn Gleason, Publishing Consultant

WINTER HOURS

COMPUTER ROOMS

Monday through Thursday: 8:00am—9:00pm
Friday 8:00am—5:00pm
We are closed on Saturday and Sunday.

ADMINISTRATIVE OFFICE

Monday through Friday: 8:00am—noon
1:00pm—5:00pm

ADDRESSES

Center for Social Science
Computation & Research
University of Washington
110 Savery Hall Box 353345
Seattle, Washington 98195 U.S.A.
(206) 543-8110
email: csscr@u.washington.edu
<http://julius.csscr.washington.edu/>

The Center for Social Science Computation and Research (CSSCR) is an interdepartmental computer center in the College of Arts and Sciences at the University of Washington. CSSCR provides facilities and consulting support for computing activity related to teaching and research at the University. This newsletter is published quarterly, and if you have items you would like included, please contact Fred Nick at 543-8110, or fred@u.washington.edu. Thank you for reading this little tiny print. Some images copyright www.clipart.com. Go look at this splendiferous website!

FROM THE DIRECTOR

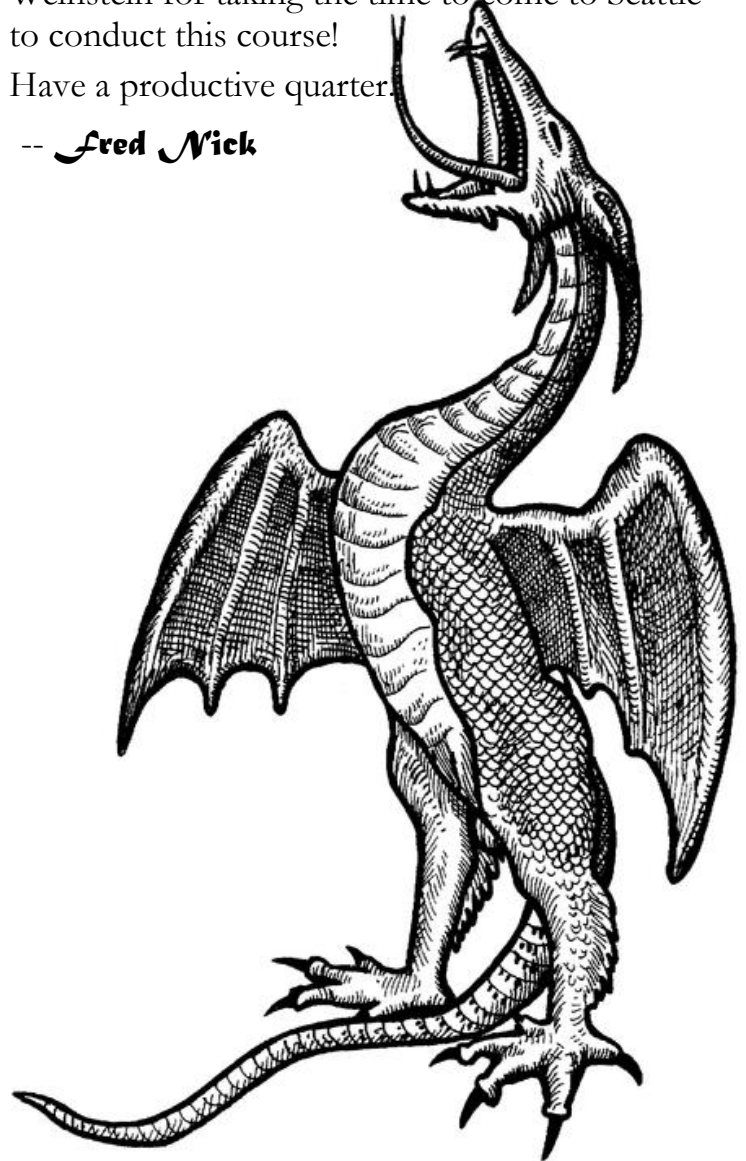
Welcome to a rather warm and pleasant Winter! The Center is very busy already and class space is filling up fast if you have not made a reservation yet.

This quarter we are honored to have a guest instructor for one of our classes. Prof. Matthew Weinstein from UW Tacoma will be teaching an intermediate course on his qualitative analysis software for Macintosh, the TAMS Analyzer.

Tabitha Hart of our staff will be teaching an intro to TAMS also. If you'd like to learn more about this powerful analysis program please take our two courses. We'd like to thank Prof. Weinstein for taking the time to come to Seattle to conduct this course!

Have a productive quarter.

-- *Fred Nick*



FROM THE ARCHIVIST

American National Election Studies (ANES) Panel Study, 2008-2009

Assessing the Consequences of Politicized Confirmation Processes, 2005-2006

Compassion Capital Fund Demonstration Program Impact Study, FY 2006-2008, United States

Data on International Election Monitoring: Three Global Datasets on Election Quality, Election Events and International Election Observation

Global Views 2010: American Public Opinion and Foreign Policy

Global Snap Poll on Tsunami in Japan and Impact on Views About Nuclear Energy, 2011

How Downsizing the Russian Military Affects Officers and Their Wives (1995-1997, Russian Federation)

How Couples Meet and Stay Together (HCMST), Wave I 2009, Wave II 2010, United States

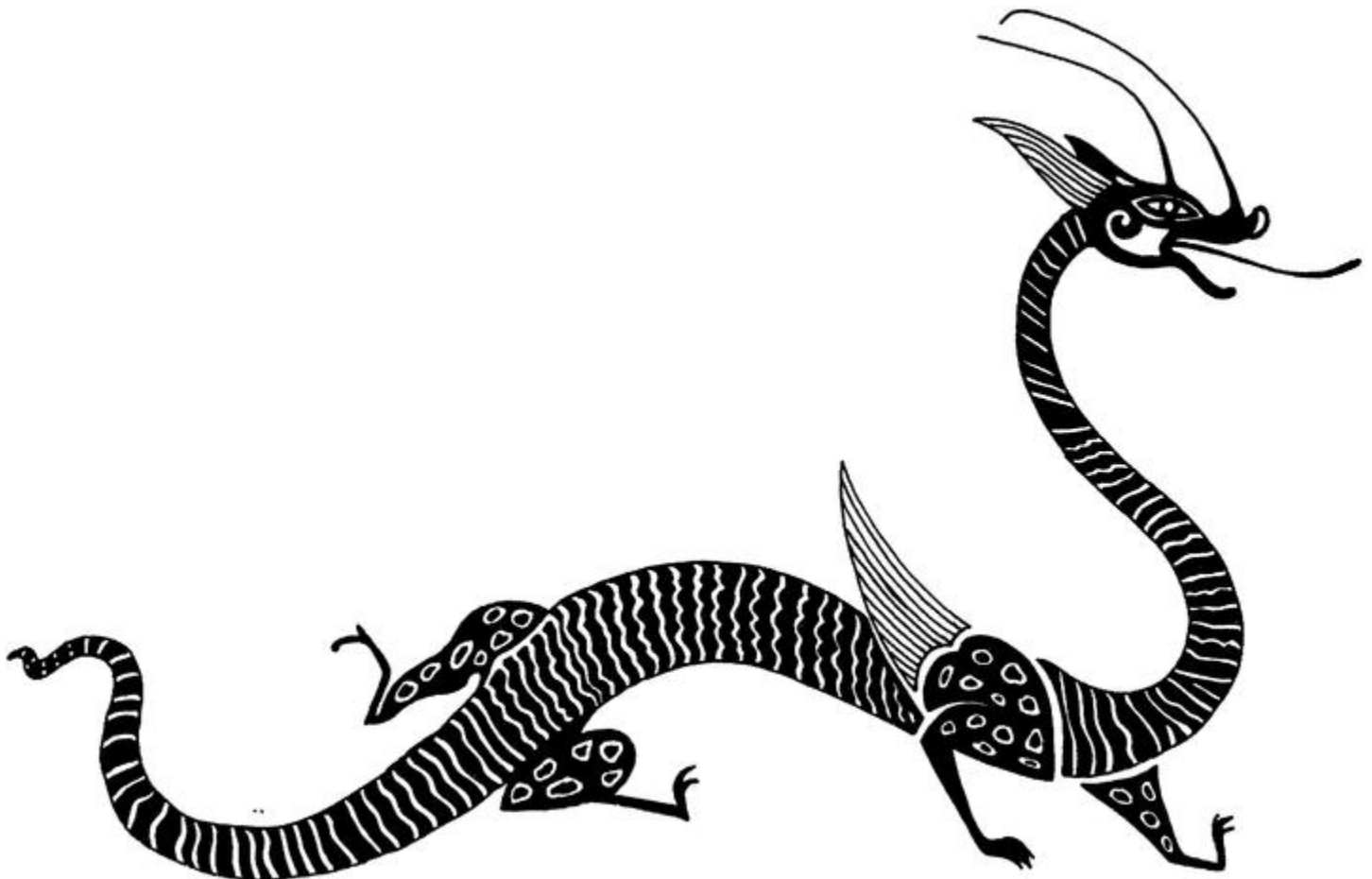
Incidents of Post-9/11 U.S. National Security Policies' Impact on Scientific Research and Higher Education in Diverse Geographic Locations, March 2002 to June 2005.

Ithaca S+R Faculty Survey 2009: Key Strategic Insights for Libraries, Publishers, and Societies

The Justice of Land in a Land of Injustice, 2004

Kenya Democratization Survey Project, 2006

Women in Prison in the 1990s: A Temporal and Institutional Comparison



CSSCR CLASSES WINTER 2012

Here are the ways you can sign up for classes: Call 543-8110; stop by 110 Savery Hall during office hours; send e-mail to ascocarp@u.washington.edu, including the class you wish to take, your name and department; or sign yourself up on our Web page. <http://julius.csscr.washington.edu/>

R(rrrr)--One Step Beyond

Instructor: Stephanie Lee
Date: Monday, January 23
Time: 11:00AM to NOON
Place: Savery 121

DIY EPubs

Instructor: Dixielynn Gleason
Date: Tuesday, January 24
Time: 8:30AM to 9:30AM
Place: Savery 121

EViews

Instructor: Angela Cappocia
Date: Wednesday, January 25
Time: 11:00AM to NOON
Place: Savery 121

Atlas.ti 6: Basic Functions & Google Earth

Instructor: Allie Stanko
Date: Tuesday, February 7
Time: 3:30PM to 4:30PM
Place: Savery 121

SAS with the Five-year American Community Survey Data

Instructor: Tina Tian
Date: Tuesday, February 14
Time: 2:30PM to 3:30PM
Place: Savery 121

WordPress

Instructor: Jeff Mathias
Date: Thursday, February 16
Time: 4:30PM to 5:30PM
Place: Savery 117

Advanced Graphics in R

Instructor: Kristan Seibel
Date: Friday, January 27
Time: 1:00PM to 2:00PM
Place: Savery 121

Introduction to TAMS Analyzer

Instructor: Tabitha Hart
Date: Wednesday, February 8
Time: 4:30PM to 5:30PM
Place: Savery 121

Intermediate TAMS Analyzer

Instructor: Dr. Matthew Weinstein
Date: Friday, February 10
Time: 10:30AM to Noon
Place: Savery 121

Intermediate SPSS

Instructor: Eric Hamilton
Date: Tuesday, March 13
Time: 4:30PM to 5:30PM
Place: Savery 117

If you would like to request academic accommodations due to a disability, please contact Disabled Student Services, 448 Schmitz, 543-8924 (V/TDD). If you have a letter from Disabled Student Services indicating you have a disability that requires academic accommodations, please present the letter to Fred Nick at CSSCR so we may discuss the accommodations you might need for class.



CSSCR CLASSES WINTER 2012

CSSCR offers free, non-credit classes to UW faculty, students and staff. Computer classes are also offered by University Computing Services (543-5970), UW Extension (543-2300) and the College of Engineering Continuing Education (543-5539). To sign up for CSSCR classes, call 543-8110, or stop by 110 Savery during office hours, or use our Web page. <http://julius.csscr.washington.edu/>

R(rrrr)--One Step Beyond

Coming Soon To a Computer Lab near You....

<dramatic music>
R...
<dramatic music climax>
Beyond!
The!
Basics!

ON: MONDAY JANUARY 23, 2012,

A DAY TO REMEMBER.

AT: 11 AM

IN: SAVERY 121

“An unmissable event” --Rolling Stone

“Epic!” --Roger Ebert

“The new standard in nerdiness!” --Wired

“Overhyped” --Seattle Times

“You should see this if you like statistics, otherwise it’s a waste of \$15” --Rotten Tomatoes

“If 2012 is the year of the apocalypse, you definitely should not spend your time on this class, but if it’s not, you probably won’t have missed anything by not going to this” --Dog Fancy

JAN 23: THE PIRATE STATISTICIANS ARE COMING.

This class covers more advanced topics in R: data manipulation through advanced indexing (useful for when your dataset isn’t in quite the right format for the analysis you want to do); using and understanding other’s R code; and tips for debugging your own code.

Instructor: Stephanie Lee
Date: Monday, January 23
Time: 11:00AM to NOON
Place: Savery 121

DIY EPubs

Learn to make EPubs (documents formatted for EReaders) in the privacy of your very own computer.

Instructor: Dixielynn Gleason
Date: Tuesday, January 24
Time: 8:30AM to 9:30AM
Place: Savery 121

EViews

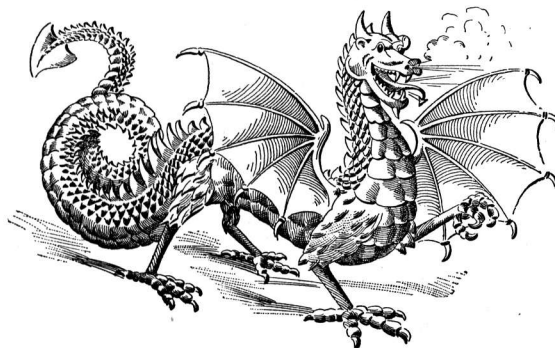
Focusing on the econometric applications of the program, this class will teach the basic tools and functions of the statistical analysis package Eviews. This short class is intended to give enough of the basics to allow for basic analysis and data management, understanding of help files, and assumes no prior knowledge of statistical programming.

Instructor: Angela Cappocia
Date: Wednesday, January 25
Time: 11:00AM to NOON
Place: Savery 121

Atlas.ti 6: Basic Functions & Google Earth

This course covers the basic terms and function of Atlas.ti, the qualitative research software. Students will be given a hands-on demonstration of the latest version, 6.2, and a primer on using Google Earth as a primary source within a project. No previous Atlas.ti knowledge necessary.

Instructor: Allie Stanko
Date: Tuesday, February 7
Time: 3:30PM to 4:30PM
Place: Savery 121



CLASS DESCRIPTIONS CONTINUED FROM PREVIOUS PAGE

Working with 5-year American Community Survey Estimates

The 5-year American Community Survey (ACS) estimates, which include data down to the census tract and block group level, are released every year from the Census Bureau. In this class, we will use 2005-2009 5-year ACS estimates to show you the tools of extracting, analyzing and mapping the ACS 5-year data. E.g. SAS Macro Syntax Tool, DataFerrett, GeoLytics ACS DVD and ACS Mapping Extension for ArcGIS.

Instructor: Tina Tian
Date: Tuesday, February 14
Time: 2:30PM to 3:30PM
Place: Savery 121

WordPress

This course will familiarize beginning users with the creation, customization, and administration of blogs through WordPress.com. We will also briefly discuss intermediate level possibilities opened up by WordPress use.

Instructor: Jeff Mathias
Date: Thursday, February 16
Time: 4:30PM to 5:30PM
Place: Savery 117

R Graphics: Creating and Troubleshooting Advanced Graphics

Do you want to create your own graphics in R? From the simple to the complex, multi-tiled graphics, this class will cover how to start conceptualizing and writing code from scratch for users that have specific graphical needs. This class will also help users troubleshoot common problems with graphics and adjustments to graphics--ex: margin and scaling problems. We will discuss base, lattice, and tile packages in the class. This class assumes that you have basic knowledge of the R programming language.

Instructor: Kristan Seibel
Date: Friday, January 27
Time: 1:00PM to 2:00PM
Place: Savery 121



Introduction to TAMS Analyzer

TAMS Analyzer is a free, open source qualitative data analysis tool for Mac users. TAMS is an acronym for Text Analysis Markup System. In this class you will learn how to get started with basic qualitative coding using TAMS Analyzer. We'll cover how to start a new project in TAMS; how to use TAMS for coding; how to rename, change, and merge codes; and how to generate simple reports on the coding that you've done. No previous experience is needed to participate in this class.

Instructor: Tabitha Hart
Date: Wednesday, February 8
Time: 4:30PM to 5:30PM
Place: Savery 121

Intermediate TAMS Analyzer

The Intermediate TAMS Analyzer Workshop is led by the program's author, Matthew Weinstein. TAMS Analyzer is a qualitative research tool for Macintosh OS X. This workshop introduces researchers, familiar with the program's basics, to TAMS Analyzer's approach to a variety of common and advanced qualitative research tasks including

- Working with and coding pdfs, images, audio, and video
- Creating and working with memos,
- Creating, sorting and comparing subsets of data
- Multiple approaches to summarizing and counting data
- Exporting data to other programs

The lab unfortunately does not have Macintosh computers. Attendees are encouraged to bring their own laptops/computers in to try the techniques discussed.

Instructor: Prof. Matthew Weinstein
Date: Friday, February 10
Time: 10:30AM to Noon
Place: Savery 121

Intermediate SPSS

This will be a brief review of basic SPSS usage (data input, selection, recoding, descriptive analysis), and then we will look at correlation and regression analysis. I'll show you both GUI (drop-down menus) and Syntax usage of the SPSS package.

Instructor: Eric Hamilton
Date: Tuesday, March 13
Time: 4:30PM to 5:30PM
Place: Savery 121